



KAMPERS 2M-series LHL



KAMPERS 2M-series LHL is a robust pump with extra shaft length resulting in more extensive sealing arrangements, such as double (cartridge) seals and gland packing. It is constructed horizontally with flanges in L-style and discharge on top. It has a built-on pressure relief valve. A foot heating system for steam, water or thermal oil is optional, as well as an electrical heating element. It is suitable for non-corrosive non-lubricating fluids.

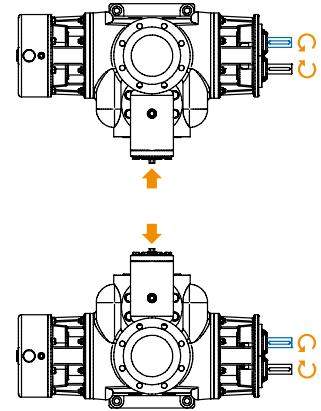
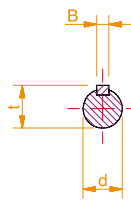
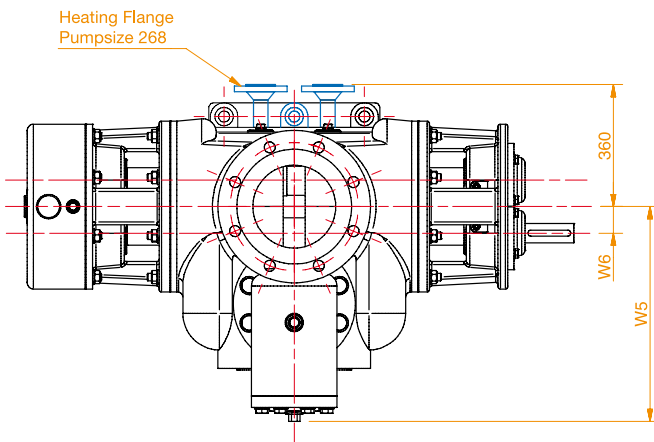
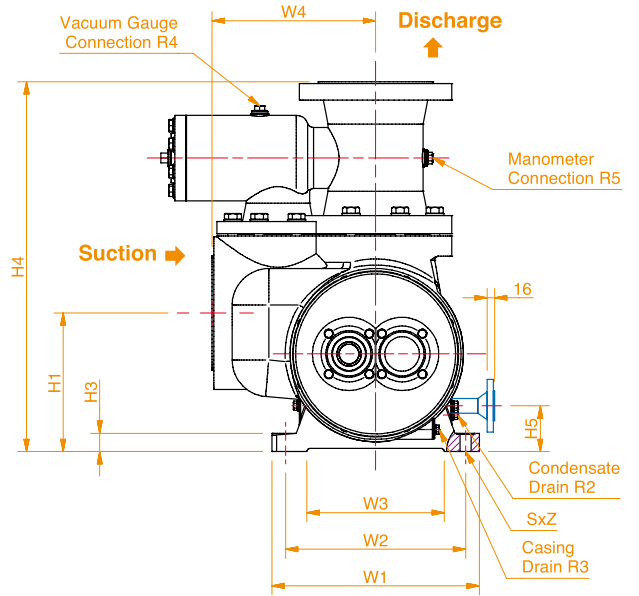
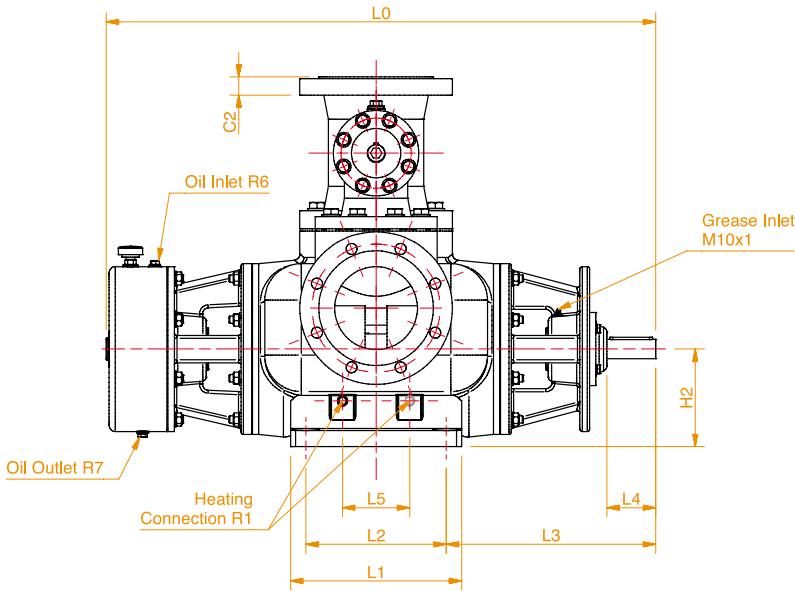
Thanks to the wide range of sealing possibilities, the LHL is applied in tank storage, shipping and industry. The LHL offers the optimal solution should environmental requirements, safety regulations or fluid properties dictate double sealing

arrangements. It is self priming and handle limited dry-running. The L-style flanges offer piping advantages in pump rooms or in other situations that require vertical piping.

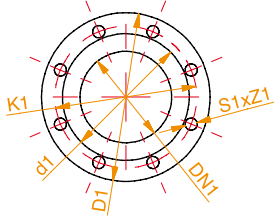
- Wide capacity range 2-900 m³/h
- Medium pressure range max 25 bar
- Medium temperature range <180°C
- Wide viscosity range 0,6-100.000 cSt
- Many sealing possibilities
- Horizontal with L-style flanges
- Foot heating: steam, water, thermal oil or electric
- Pressure relief valve



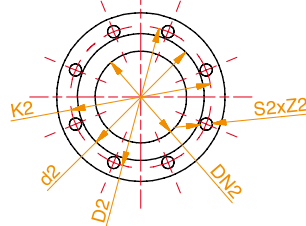
We reserve the right to alter any details of our products at any time without giving notice. © Copyright of KAMPERS pumps & service whose property this documentation remains. No part thereof may be disclosed, copied, duplicated or in any other way made use of, except with the approval of KAMPERS pumps & service, Puttershoek, (The Netherlands).



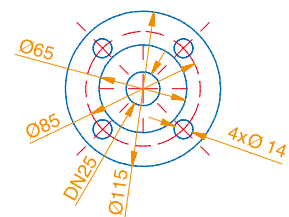
Suction Flange



Discharge Flange



Heating Flange



2M LHL PUMPSIZE	SUCTION FLANGE							DISCHARGE FLANGE						
	DN1	D1	K1	d1	S1	Z1	DN2	D2	K2	d2	S2	Z2	C2	
82	Ø80	Ø200	Ø160	Ø133	8	M16	Ø80	Ø200	Ø160	Ø133	8	Ø18	26	
98	Ø100	Ø220	Ø180	Ø158	8	M16	Ø100	Ø235	Ø190	Ø158	8	Ø22	28	
114	Ø125	Ø250	Ø210	Ø184	8	M16	Ø125	Ø270	Ø220	Ø184	8	Ø26	30	
140	Ø150	Ø285	Ø240	Ø212	8	M20	Ø150	Ø300	Ø250	Ø212	8	Ø26	34	
166	Ø200	Ø340	Ø295	Ø274	12	M20	Ø200	Ø360	Ø310	Ø278	12	Ø26	34	
206	Ø250	Ø405	Ø355	Ø320	12	M24	Ø250	Ø425	Ø370	Ø335	12	Ø31	36	
268	Ø300	Ø445	Ø400	Ø370	12	M20	Ø300	Ø485	Ø430	Ø390	16	Ø31	40	

2M LHL PUMPSIZE	OUTLINE & INSTALLATION DIMENSIONS													SHAFT DIMENSIONS				HEATING, LUBRICATION & DRAIN DIMENSIONS							WEIGHT Kg							
	L0	L1	L2	L3	W1	W2	W3	W4	W5	W6	H1	H2	H3	H4	S	Z	d	L4	B	t	L5	H5	R1	R2		R3	R4	R5	R6	R7		
82	719	190	150	271,5	255	220	158	195	212	33,5	177	120	20	471	4	Ø14	Ø22	50	6	24,5	70	54	Rc1/2	Rp1/4	Rp1/4	Rp1/4	Rp1/4	Rp1/4	Rp1/4	M14x1,5	M14x1,5	118
98	798	240	190	304	300	260	190	220	252,5	38,5	207	140	26	546	4	Ø14	Ø28	60	8	31	95	65	Rc1/2	Rp1/4	Rp1/4	Rp1/4	Rp1/4	Rp1/4	Rp1/4	M14x1,5	M14x1,5	185
114	903	280	230	343	340	295	225	268	352	43,5	227	160	30	606	4	Ø18	Ø32	80	10	35	110	75	Rc3/4	Rc1/2	Rp1/4	Rp1/4	Rp1/4	Rp1/4	Rp1/4	M14x1,5	M14x1,5	283
140	1066	350	290	393	380	325	240	290	363	54	270	180	32	687	6	Ø23	Ø42	80	12	45	145	82	Rc1	Rc1/2	Rp1/4	Rp1/4	Rp1/4	Rp1/4	Rp1/4	M14x1,5	M14x1,5	397
166	1246	400	340	460	480	420	320	345,5	488	64	325	225	35	769	6	Ø23	Ø48	110	14	51,5	170	108	Rc1	Rc1/2	Rp1/2	Rp1/4	Rp1/4	Rp1/4	M20x1,5	M14x1,5	642	
206	1498	470	400	558,5	560	500	380	395	517	80	385	260	36	891	6	Ø27	Ø60	120	18	64	200	115	Rc1	Rc1/2	Rp1/2	Rp1/4	Rp1/4	Rp1/4	M20x1,5	M14x1,5	818	
268	1516	480	400	558,5	680	610	470	470	685	95	450	315	45	1068	6	Ø30	Ø60	120	18	64	250	115	DN25	Rc1/2	Rp1/2	Rp1/4	Rp1/4	Rp1/4	M20x1,5	M20x1,5	1115	

All dimensions are in mm unless stated otherwise.

Information

Should you like to receive more information or a quotation, please do not hesitate to contact us.

KAMPERS pumps & service
Oosthavenzijde 5
NL-3297 LD Puttershoek

PO box 5401
NL-3297 ZG Puttershoek
The Netherlands

T +31 78 676 0610
F +31 78 676 1149
E info@kampers.com

www.kampers.com