



## KAMPERS 1M-series LHE(.S)



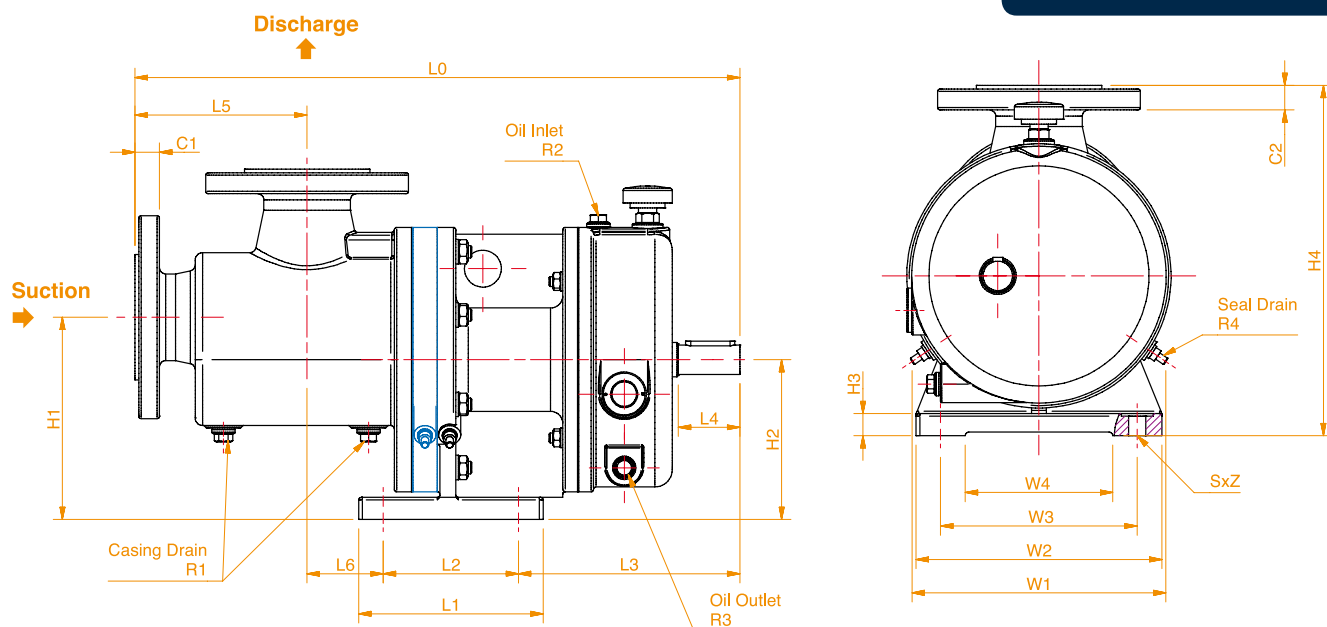
KAMPERS 1M-series LHE is constructed with one pair of screws which makes it suitable for smaller capacities. Gears and bearings are placed on one side making the pump casing easy to remove for cleaning. The screw entrance is inline with the suction flange, resulting in a compact design and low NPSHr values. The pump is self-priming and can handle limited dry-running. In LHE.S execution it can handle corrosive fluids as well.

In shipping the pump is used for slops, tank wash, stripping, fuel oil and lube oil. Furthermore, this type of pump has a wide variety of applications in the food industry, thanks to the smooth and low-shear treatment of fluids and the easy cleaning

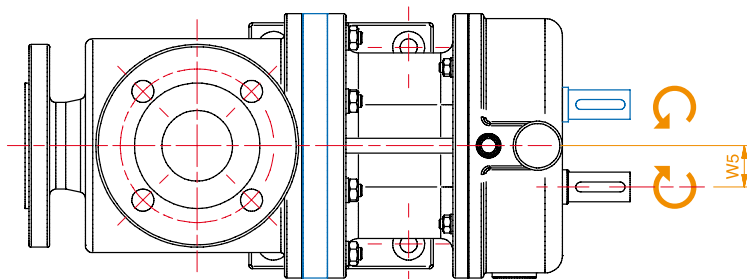
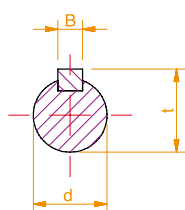
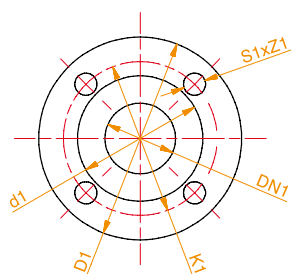
properties. The availability of different material executions makes the pump very suitable for many (petro) chemical industries.

- Small capacity range 1-50 m<sup>3</sup>/h
- Low pressure range max 10 bar
- Low temperature range <100°C
- Medium viscosity range 0,6-1500 cSt
- Ultra low NPSHr
- Single sealing
- Easy cleaning
- No heating
- No pressure-relief valve
- Also in bronze and stainless steel (LHE.S)

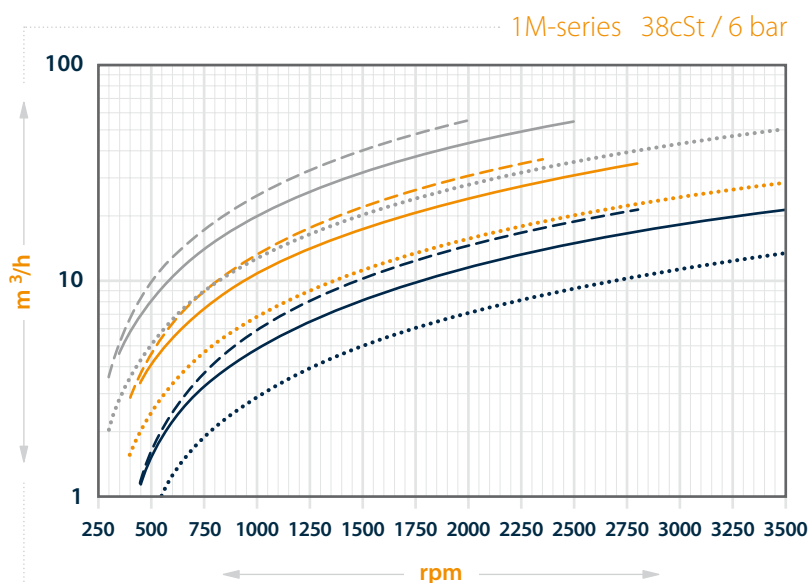
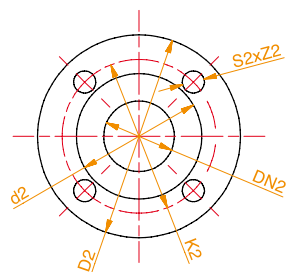




### Suction Flange



### Discharge Flange



1M LHE(.S) PUMPSIZE	SUCTION FLANGE							DISCHARGE FLANGE						
	DN1	D1	K1	d1	S1	Z1	C1	DN2	D2	K2	d2	S2	Z2	C2
82	050	0165	0125	0102	4	018	20	050	0165	0125	0102	4	018	20
98	065	0185	0145	0118	4	018	20	065	0185	0145	0118	4	018	20
114	080	0200	0160	0132	8	018	26	080	0200	0160	0132	8	018	26

1M LHE(.S) PUMPSIZE	OUTLINE & INSTALLATION DIMENSIONS																			SHAFT DIMENSIONS				LUBRICATION & DRAIN DIMENSIONS				WEIGHT	WEIGHT*
	L0	L0*	L1	L2	L3	L5	L6	L6*	W1	W2	W3	W4	W5	H1	H2	H3	H4	S	Z	d	L4	B	t	R1	R2	R3	R4	Kg	Kg*
82	472	492	150	110	160	140	62	82	230	200	160	120	33,5	164,5	130	18	285	4	Ø14	Ø24	50	8	27	M14X1,5	M14X1,5	M14X1,5	M10X1	52	55
98	535	555	140	100	169	190	76	96	260	250	200	150	38,5	190	150	18	315	4	Ø14	Ø25	60	8	28	M14X1,5	M14X1,5	M14X1,5	M10X1	71	76
114	631	631	204	160	190	199	82	82	310	280	240	200	43,5	230	180	24	380	4	Ø18	Ø28	60	8	31	M14X1,5	M14X1,5	M14X1,5	M10X1	120	115

\* LHE.S execution (bronze/stainless steel). | All dimensions are in mm unless stated otherwise.

## Information

Should you like to receive more information or a quotation, please do not hesitate to contact us.

**KAMPERS pumps & service**  
Oosthavenzijde 5  
NL-3297 LD Puttershoek

PO box 5401  
NL-3297 ZG Puttershoek  
The Netherlands

**T** +31 78 676 0610

**F** +31 78 676 1149

**E** info@kampers.com

[www.kampers.com](http://www.kampers.com)